

Certificate of Analysis

Product: Wadi Grüner Lavendel *Lavandula viridis_1*

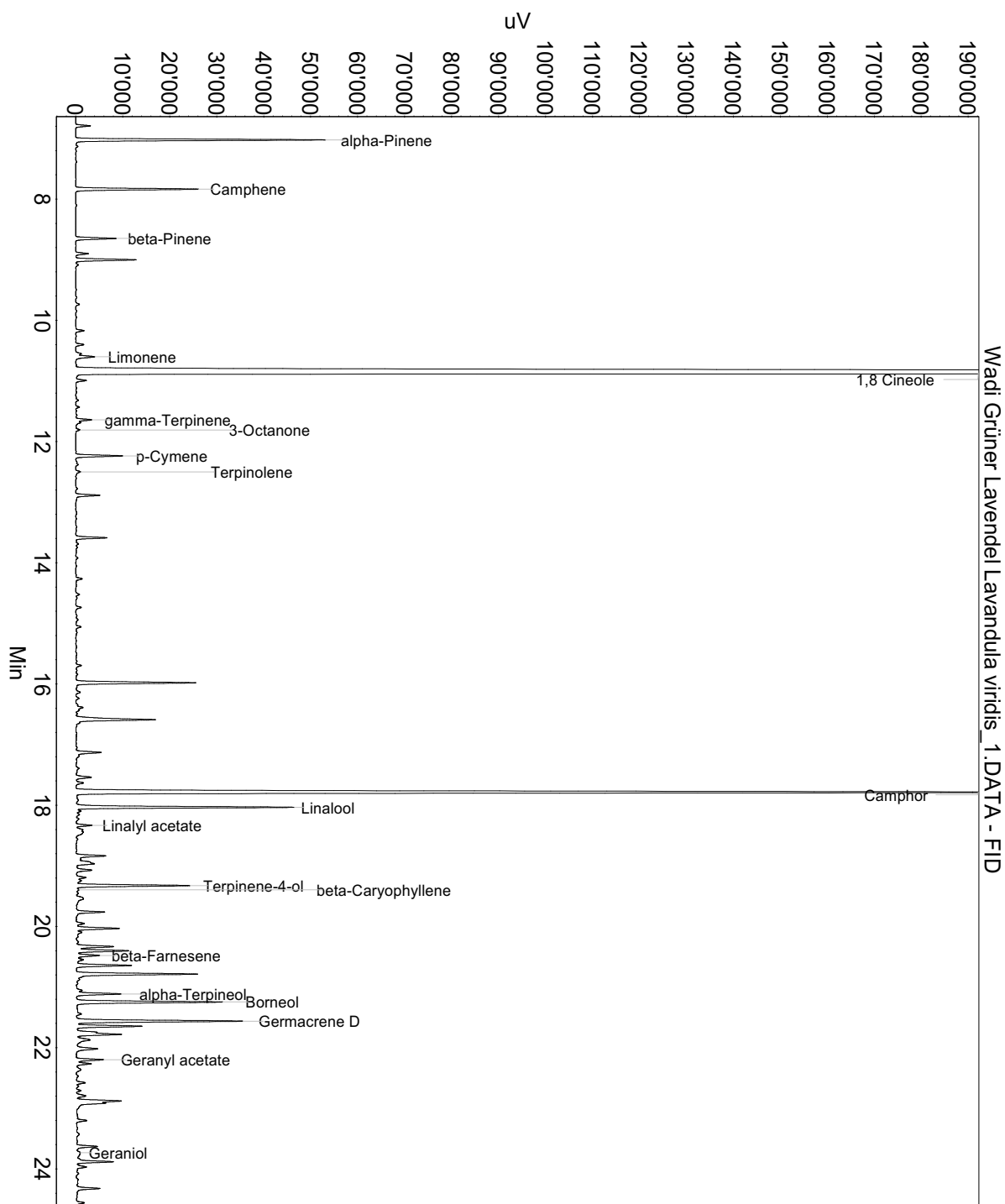
Lot: 240919

Date of analysis: 24.09.2019 15:18:46

System: GC-430 FID

Column: BGB Wax 60m / 0.25mm / 0.25um

Method: 180306 essential basis 60min



This data sheet was issued to the best of our knowledge and is supplied without warranty for its correctness or accuracy.

Certificate of Analysis

Product: Wadi Grüner Lavendel Lavandula viridis_1

Lot: 240919

Date of analysis: 24.09.2019 15:18:46

System: GC-430 FID

Column: BGB Wax 60m / 0.25mm / 0.25um

Method: 180306 essential basis 60min

Index	Name	Time [Min]	Area [uV.Min]	Area % [%]	Allergene
1		6.62	22.9	0.035	
2		6.79	90.8	0.137	
3	alpha-Pinene	7.02	1482.8	2.240	
4	Camphene	7.84	773.2	1.168	
5	beta-Pinene	8.65	263.0	0.397	
6		8.90	79.8	0.120	
7		9.00	391.9	0.592	
8		9.09	18.1	0.027	
9		10.17	56.1	0.085	
10		10.40	54.8	0.083	
11	Limonene	10.60	114.3	0.173	Directive 2003/15EC (7th)
12	1,8 Cineole	10.87	35264.3	53.273	
13		10.99	70.7	0.107	
14		11.43	21.4	0.032	
15	gamma-Terpinene	11.64	155.5	0.235	
16	3-Octanone	11.81	33.1	0.050	
17	p-Cymene	12.24	306.4	0.463	
18	Terpinolene	12.50	39.0	0.059	
19		12.89	166.8	0.252	
20		13.59	196.6	0.297	
21		14.27	45.1	0.068	
22		14.74	38.6	0.058	
23		15.06	34.8	0.053	
24		15.70	43.0	0.065	
25		15.98	817.0	1.234	
26		16.14	35.3	0.053	
27		16.39	80.9	0.122	
28		16.56	75.2	0.114	
29		16.59	605.3	0.914	
30		17.13	184.7	0.279	
31		17.19	23.7	0.036	
32		17.54	115.3	0.174	
33		17.63	53.8	0.081	
34	Camphor	17.79	7537.3	11.386	
35	Linalool	18.03	1396.0	2.109	Directive 2003/15EC (7th)
36		18.10	48.5	0.073	
37	Linalyl acetate	18.33	93.6	0.141	
38		18.41	57.0	0.086	

This data sheet was issued to the best of our knowledge and is supplied without warranty for its correctness or accuracy.

Certificate of Analysis

Product: Wadi Grüner Lavendel Lavandula viridis_1

Lot: 240919

Date of analysis: 24.09.2019 15:18:46

System: GC-430 FID

Column: BGB Wax 60m / 0.25mm / 0.25um

Method: 180306 essential basis 60min

Index	Name	Time [Min]	Area [uV.Min]	Area % [%]	Allergene
39		18.84	217.8	0.329	
40		18.89	35.5	0.054	
41		18.96	219.1	0.331	
42		19.07	131.1	0.198	
43		19.19	75.1	0.113	
44		19.25	49.1	0.074	
45	Terpinene-4-ol	19.33	764.2	1.154	
46	beta-Caryophyllene	19.40	41.3	0.062	
47		19.55	118.0	0.178	
48		19.76	209.5	0.317	
49		19.95	60.9	0.092	
50		20.03	311.5	0.471	
51		20.10	47.1	0.071	
52		20.33	272.3	0.411	
53		20.40	365.5	0.552	
54	beta-Farnesene	20.48	166.2	0.251	
55		20.55	56.8	0.086	
56		20.64	381.9	0.577	
57		20.79	882.6	1.333	
58		21.05	39.5	0.060	
59	alpha-Terpineol	21.11	307.3	0.464	
60	Borneol	21.25	1017.6	1.537	
61	Germacrene D	21.56	1210.9	1.829	
62		21.65	444.6	0.672	
63		21.75	123.9	0.187	
64		21.78	321.9	0.486	
65		21.87	165.3	0.250	
66		22.02	191.3	0.289	
67	Geranyl acetate	22.20	187.4	0.283	
68		22.27	107.2	0.162	
69		22.36	57.7	0.087	
70		22.58	56.8	0.086	
71		22.71	15.9	0.024	
72		22.80	79.4	0.120	
73		22.88	545.5	0.824	
74		23.20	66.3	0.100	
75		23.63	144.4	0.218	
76	Geraniol	23.73	57.8	0.087	Directive 2003/15EC (7th)

This data sheet was issued to the best of our knowledge and is supplied without warranty for its correctness or accuracy.

Certificate of Analysis

Product: Wadi Grüner Lavendel Lavandula viridis_1

Lot: 240919

Date of analysis: 24.09.2019 15:18:46

System: GC-430 FID

Column: BGB Wax 60m / 0.25mm / 0.25um

Method: 180306 essential basis 60min

Index	Name	Time [Min]	Area [uV.Min]	Area % [%]	Allergene
77		23.88	264.9	0.400	
78		23.97	78.7	0.119	
79		24.32	158.3	0.239	
80		24.56	52.8	0.080	
81		24.62	48.3	0.073	
82		24.73	53.1	0.080	
83		25.44	73.4	0.111	
84		25.99	75.2	0.114	
85		26.13	669.9	1.012	
86		26.54	73.4	0.111	
87		26.60	25.8	0.039	
88		26.67	69.3	0.105	
89		27.58	133.2	0.201	
90		27.86	61.1	0.092	
91		28.00	99.8	0.151	
92		28.12	46.6	0.070	
93		28.39	62.4	0.094	
94		28.51	41.6	0.063	
95		29.09	42.9	0.065	
96		29.41	134.7	0.203	
97		29.54	48.3	0.073	
98	alpha-Bisabolol	30.12	2309.9	3.490	
99		30.75	137.4	0.208	
100		31.01	101.0	0.153	
101		31.09	25.8	0.039	
102		31.29	56.3	0.085	
103		31.84	713.9	1.078	
104		31.95	105.0	0.159	
Total			66195.7	100.000	

This data sheet was issued to the best of our knowledge and is supplied without warranty for its correctness or accuracy.